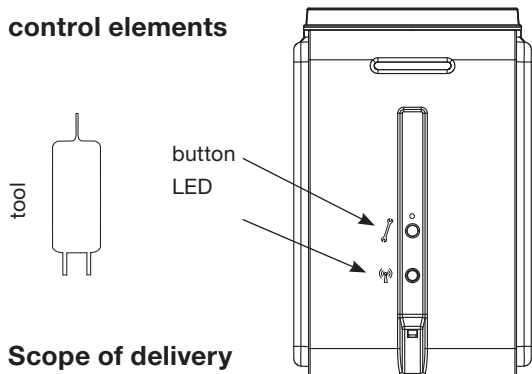


# User manual Stella Z

## description

### control elements



### Scope of delivery

- 1 Stella Z
- 1 User manual
- 1 Connector
- 3 Adapters (Danfoss RA, RAV, RAVL)
- 1 Tool

### Inserting/replacing batteries

1. open the battery case
2. insert batteries
3. close the battery case

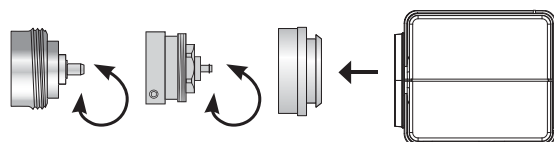
Only at the first installation, the Stella Z drives into mounting position. It stays at this position, until the button was pressed.

### Montage

Stella Z can be quickly and easily mounted on all common valves. It can be installed without grime and water spots because the heating circuit is not interrupted.

1. Use an appropriate adapter, if required, and push it onto the valve.
2. Screw the connector on the valve or the adapter.
3. Now, you put Stella Z on the connector until it noticeably clicks into place.

valve – [adapter] – coupling ring – Stella Z



Never turn Stella Z on the coupling ring!

### Initial Commissioning (adaption)

After the batteries were inserted, the ram drives back and stays in the mounting position. Press the button after the mounting. Now Stella Z adapts and after the adaption it stays in the closed valve.




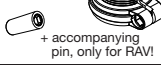


### LEDs:

- **OK** – Green (2 sek.)  
(Learn completed, NIF sent, Wakeup sent,...)
- **Failed** – Red (2 sek.)  
(Learn mode failed or NIF/Wakeup Notif send failed)
- **NWI** – Red-Green blink  
(only in NWI mode)
- **Install** – Green blink (Installation mode)
- **Error** – Red blink (Error communicating)

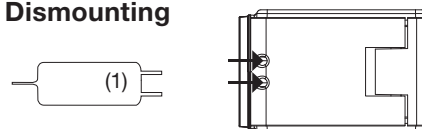
### Learning in of the radio partner:

1. Set the partner (Postmaster) into the learning mode.
2. Push the button on Stella Z with the supplied tool for at least 10 seconds.
3. Z-Wave-Station gives a signal, when Stella Z is connected.

### Adapters

Heimeier, Junkers Landys+Gyr, MNG, Honeywell, Braukmann thread-measure dimension of M 30x1,5	no adapter required 
Danfoss RAV (beiliegender Pin muss auf Ventilstößel gesteckt werden)	 + accompanying pin, only for RAV!
Danfoss RA	
Danfoss RAVL	

### Dismounting



1. Insert both tips of the supplied tool (1) into the opening.
2. Remove Stella Z from the adapter/valve.